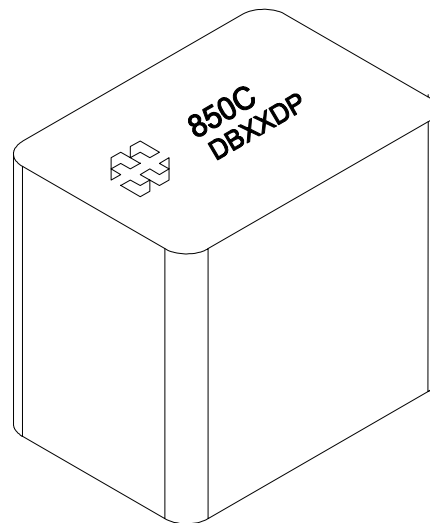
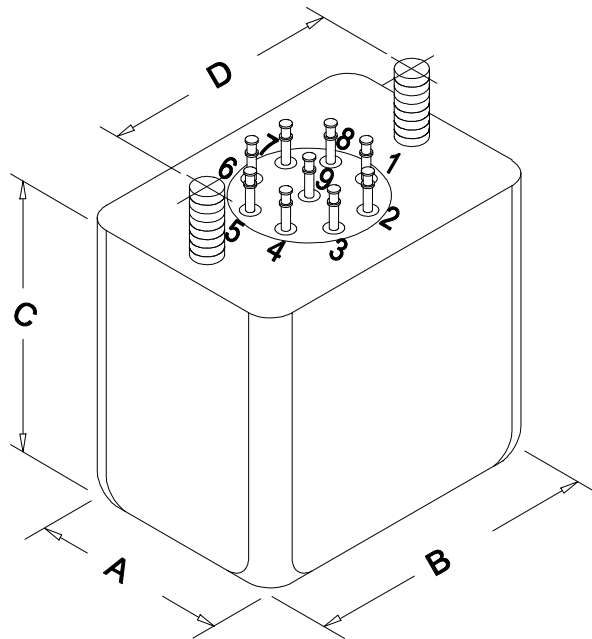
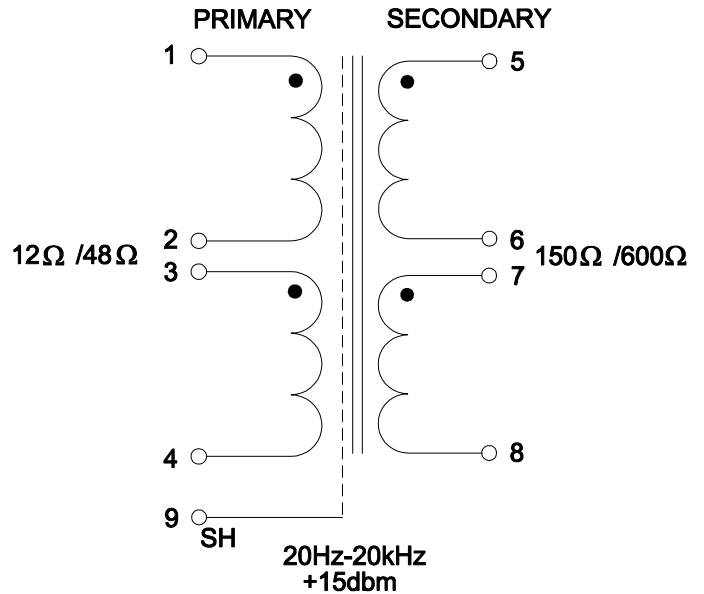


EDB850C

1. HERMETICALLY SEALED CONSTRUCTION.
2. DEEP-DRAWN STEEL CASE WITH TIN PLATED FINISH.
3. BALANCED SPLIT WDGS. ON PRI. & SEC.
4. ELECTROSTATIC SHIELD BETWEEN PRI. & SEC.
5. 80% NICKEL CORE
6. #6-32 MOUNTING SCREWS.
7. FREQ. RESPONSE $\pm 0.5\text{DB}$ MAX. FROM 20Hz TO 20kHz.
8. PIN 1 - PIN 2 = PIN 3 - PIN 4 = $1.620\Omega \pm 20\%$
9. PIN 5 - PIN 6 = PIN 7 - PIN 8 = $15.40\Omega \pm 20\%$
10. DIELECTRIC STRENGTH BETWEEN PRI. & SEC.: 250VAC, 1SEC

DIMENSIONS:	
A	1.200" ± 0.063
B	1.700" ± 0.063
C	1.650" MAX.
D	1.320" ± 0.063



HAMMOND
MANUFACTURING™

ELECTRONIC DIVISION
52 RANKIN PLACE,
WATERLOO, ONTARIO, N2J 3Z5
PH # (519) 886-6181
FAX # (519) 886-9540

TITLE

850C

NO	DATE	REVISION	DWG. BY
0	03/12/13	RELEASED. C.I.	CORINA ILIE
			DATE
			03/12/13
			DIM IN(Ø)MM()

EDB850C